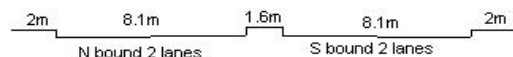
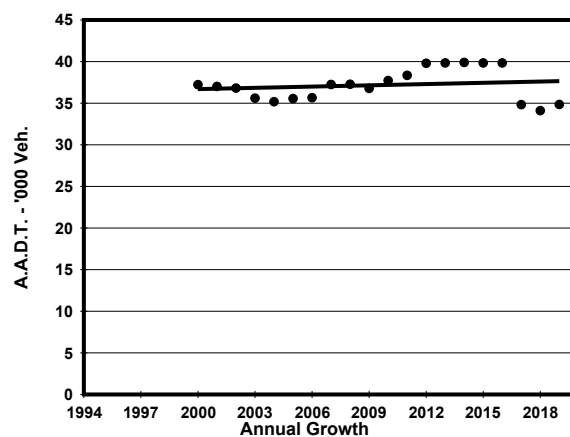
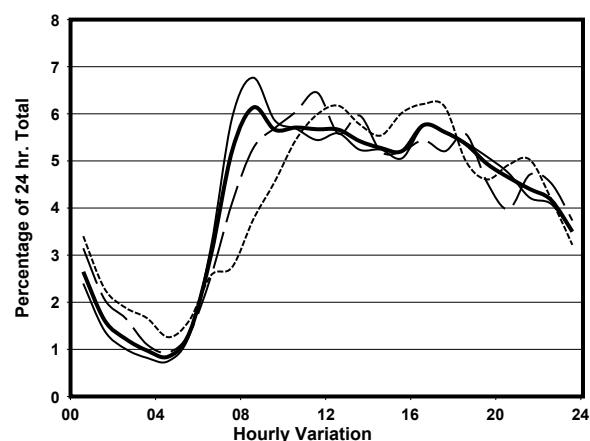
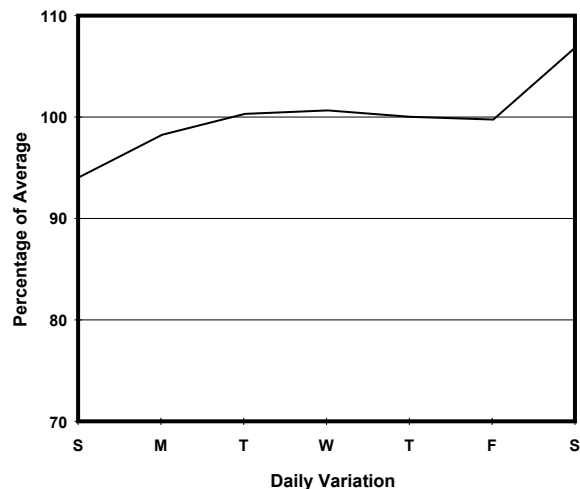
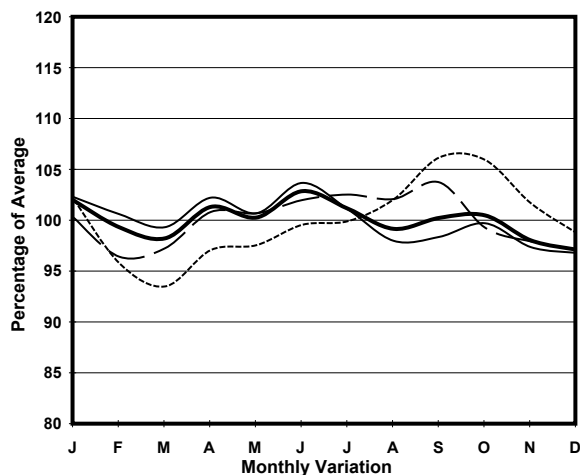


YEAR 2019  
CORE STATION 1017  
ROAD NETWORK MAJOR  
ROAD TYPE DISTRICT DISTRIBUTOR

LINK AP LEI CHAU BRIDGE & AP LEI CHAU BRIDGE RD  
(from WONG CHUK HANG RD to AP LEI CHAU EST)



## 1. TRAFFIC FLOW VARIATION AND GROWTH



— All day — Mon.- Fri. ..... Sat. - - - - Sun.

## 2. TRAFFIC CHARACTERISTICS (BY DIRECTION)

Parameter	All - Day	Mon. - Fri.	Sat.	Sun.
<b>SOUTH BOUND</b>				
A.A.D.T.	16970	16800	18210	16950
R 12 / 24 - %	63.9	64.8	62.4	61.1
R 16 / 24 - %	84.4	85.1	83	82.1
AM Peak Hour	0900-1000	0800-0900	0900-1000	0900-1000
One-way flow at AM peak hour	920	960	1080	640
T - % (AM)	-	-	-	-
PM Peak Hour	1600-1700	1700-1800	1800-1900	1600-1700
One-way flow at PM peak hour	1010	990	1020	1220
T - % (PM)	-	-	-	-
Prop.of commercial vehicles - 16 hr.	-	-	-	-
<b>NORTH BOUND</b>				
A.A.D.T.	17880	18100	19150	15890
R 12 / 24 - %	69.3	70	68.9	65.7
R 16 / 24 - %	85.3	86.1	84	82.1
AM Peak Hour	0800-0900	0800-0900	0800-0900	0900-1000
One-way flow at AM peak hour	1240	1400	1110	860
T - % (AM)	-	-	-	-
PM Peak Hour	1700-1800	1600-1700	1700-1800	1700-1800
One-way flow at PM peak hour	1000	1030	1110	1110
T - % (PM)	-	-	-	-
Prop.of commercial vehicles - 16 hr.	-	-	-	-

## 3. OTHER INFORMATION AND COMMENT